

USMOWER

CREATING MOWING SOLUTIONS

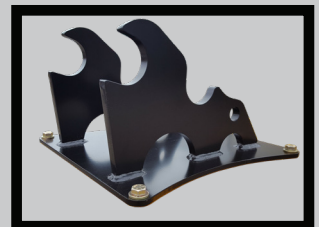
EX60HDBD

EXCAVATOR FLAIL MOWER



Built for parent machines from 30000-50000 lbs

- The EX60HDBD Excavator Flail Brush Mower cuts and mulches up to 6" trees, shrubs, vegetation, grass and weeds. Built for longevity with a heavy duty shroud, solid shaft stub and heavy duty end plates
- Triple Blade Configuration-2 flail blades (2lb)/1 thatch blade (2lb)
- 6" x 5/8" Wall DOM electronically balanced cutter shaft with 2 1/2" stubs, free end bearing and drive stub
- 3000PSI Pressure & Return hoses with Flat Face couplers & 1/4" x 100" case drain line with 3/8" flat face coupler
- 100's of mount configurations available or will build to suit
- Gear motor matched to available auxiliary oil flow up to 3000psi
Optional Piston Motor for up to 5000 psi
- High Strength steel-1/4" shroud, 1/2" end plates, 1/2" bearing plate
- 4-V Belt Drive System extends motor life and allows machine to mount closer to the machine
- HARDOX Skid Shoes
- Polyester powder coat high visibility yellow finish with UV Protection
- 12 Month warranty parts & labor



Mount Included
in Price



Optional Ground Roller available.



Specifications

Cutting Width-60"
Cutting Capacity-4-6"
Required auxiliary flow
30-55gpm
Approximate Weight
1950bs

MANUFACTURED IN THE USA