

# USMOWER

**CREATING MOWING SOLUTIONS**

**\$9995.95**

**Optional Thumb Saddle**

**\$1199.00**

**Optional Ground Roller**

**\$1199.00**

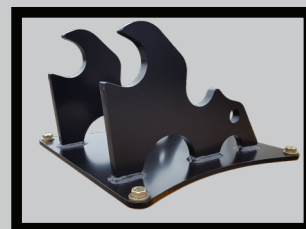
## EX40 EXCAVATOR FLAIL MOWER



Shown with Optional Thumb Saddle

**Built for parent machines from 10000-18000 lbs**

- The EX40 Excavator Flail Brush Mower cuts and mulches up to 4" trees, shrubs, vegetation, grass and weeds. Used for clearing riverbanks, ditches, hillsides, utility right of ways, walking trails and more.
- Built for parent machines from 10000-18000 lbs. Sold complete with custom mount
- Triple Blade Configuration-2 flail blades (2lb)/1 thatch blade (2lb)
- 6" x 3/8" Wall DOM electronically balanced cutter shaft with 1 15/16" stubs
- 3000PSI Pressure & Return hoses with Flat Face couplers & 1/4" x 120" case drain line with 3/8" flat face coupler
- 100's of mount configuration available or will build to suit
- Gear motor matched to available auxiliary oil flow
- High Strength steel-3mm shroud, 3/16" end plates, 1/2" bearing plates
- HARDOX Skid Shoes
- Polyester powder coat high visibility yellow finish with UV Protection
- 12 Month warranty parts & labor



Mount Included  
in Price



Optional thumb saddle and  
ground roller available.



### **Specifications**

Cutting Width-40"  
Cutting Capacity-4"  
Required auxiliary flow  
15-40gpm  
Approximate Weight-950lbs

**MANUFACTURED IN THE USA**