

US MOWER

\$13499.95

Optional Thumb Saddle \$1399.00

Piston Motor Option with

High Pressure Hose Kit \$3550.00

Optional Ground Roller \$1299.00

Optional High Flow Hose Kit \$750.00

CREATING MOWING SOLUTIONS

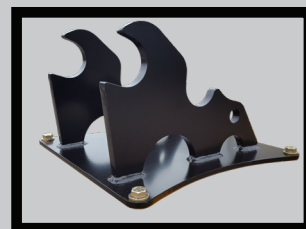
EX50HD EXCAVATOR FLAIL MOWER



Built for parent machines from 18000-30000 lbs

Shown with Optional Ground Roller.

- The EX50HD Excavator Flail Brush Mower cuts and mulches up to 6" trees, shrubs, vegetation, grass and weeds. Used for clearing riverbanks, ditches, hillsides, utility right of ways, walking trails and more. Built with Ultra Heavy Duty Shroud and Solid Shaft Stub
- Triple Blade Configuration-2 flail blades (2lb)/1 thatch blade (2lb)
- 7" x 1/2" Wall DOM electronically balanced cutter shaft with 2 1/4" stubs
- 3000PSI Pressure & Return hoses with Flat Face couplers & 1/4" x 100" case drain line with 3/8" flat face coupler
- 100's of mount configurations available or will build to suit
- Gear motor matched to available auxiliary oil flow up to 3000psi
Optional Piston Motor for up to 5000 psi
- High Strength steel-1/4" shroud, 3/8" end plates, 1/2" bearing plates
- HARDOX Skid Shoes
- Polyester powder coat high visibility yellow finish with UV Protection
- 12 Month warranty parts & labor



Mount Included
in Price

Optional thumb saddle and
ground roller available.



Specifications

Cutting Width-50"

Cutting Capacity-4-6"

Required auxiliary flow
25-40gpm

Approximate Weight
1500lbs

MANUFACTURED IN THE USA