

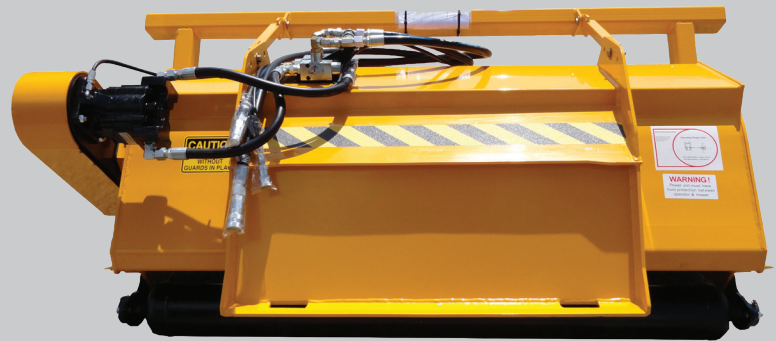
# US MOWER

**\$17699.95**

Piston Motor Option with  
High Pressure Hose Kit \$3550.00  
Optional High Flow Hose Kit \$750.00  
Optional Front Tree and Brush Guard \$1799.00

**CREATING MOWING SOLUTIONS**

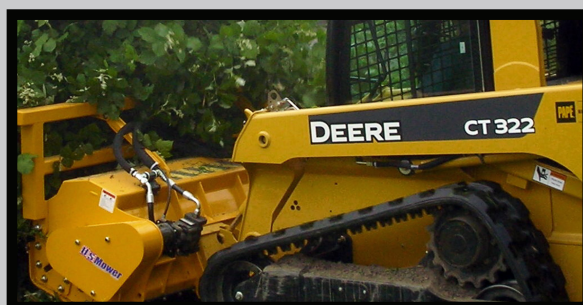
## RZR60



## SKID STEER FLAIL MOWER

**Built for parent machines from 5000 lbs**

- 60" Belt drive flail skid-steer mower. Cuts and mulches vegetation grass, weeds, shrubs and trees up to 6". Heavy duty construction. Built for Parent Machines 5000lbs and up.
- 100,000 psi yield strength 1/4" steel construction
- 3/8" end plates, 1/2" bearing end plates
- HARDOX skid shoes
- Gear hydraulic motor matched to available flow and pressures up to 3000 psi
- Piston motor for system pressures over 3000 psi with high pressure hose kit
- Triple Blade Configuration-2 flail blades (2lb)/1 thatch blade (2lb)
- Adjustable rear roller: 1/4" x 6-5/8" x 66.0"
- 3000 PSI 3/4" x 85" Pressure & Return Hoses with 1/2" Flat Face couplers
- 1/4" x 100" @ 3000 PSI Case Drain Hose with 3/8" Flat Face coupler
- Polyester Powder Coat High Visibility Yellow Finish with UV Protection
- 12 Month Warranty Parts & Labor



**MANUFACTURED IN THE USA**

### **Specifications**

Cutting Width-60"  
Cutting Capacity-6"  
Required auxiliary flow  
22-45gpm  
Approximate Weight  
1550bs