

# USMOWER



## **EX40HD** EXCAVATOR FLAIL MOWER

*Built for parent machines from 16000-25000 lbs*

- The EX40HD Excavator Flail Brush Mower cuts and mulches up to 4" trees, shrubs, vegetation, grass and weeds. Used for clearing riverbanks, ditches, hillsides, utility right of ways, walking trails and more. Built for longevity with a heavy duty shroud, solid shaft stub, free end guard and heavy duty end plates.
- Built for parent machines from 16000-25000 lbs. Sold complete with custom mount
- Triple Blade Configuration-2 flail blades (2lb)/1 thatch blade (2lb)
- 6" x 1/2" Wall DOM electronically balanced cutter shaft with 1 15/16" stubs
- Includes 3/4" x 85" pressure & return hoses with 5/8" flat face coupler with 1/4" x 120" case drain line with 3/8" flat face coupler
- 100's of mount configuration available or will build to suit
- Gear motor matched to available auxiliary oil flow
- High Strength steel-3/16" shroud, 5/16" end plates, 1/2" bearing plates
- HARDOX Skid Shoes
- Polyester powder coat high visibility yellow finish with UV Protection
- 12 Month warranty parts & labor



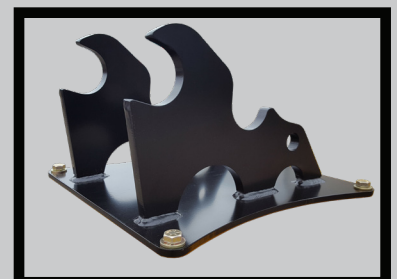
Optional thumb saddle and ground roller available.

### **Specifications**

- Cutting Width-40"
- Cutting Capacity-4"
- Required auxiliary flow
- 20-40gpm
- Approximate Weight-1150lbs



Mount Included in Price



**Manufactured in the USA**

**[www.usmower.com](http://www.usmower.com)**