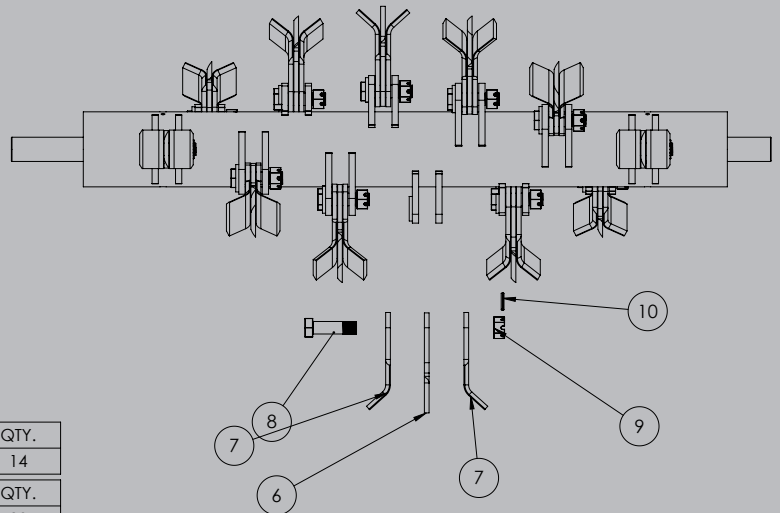
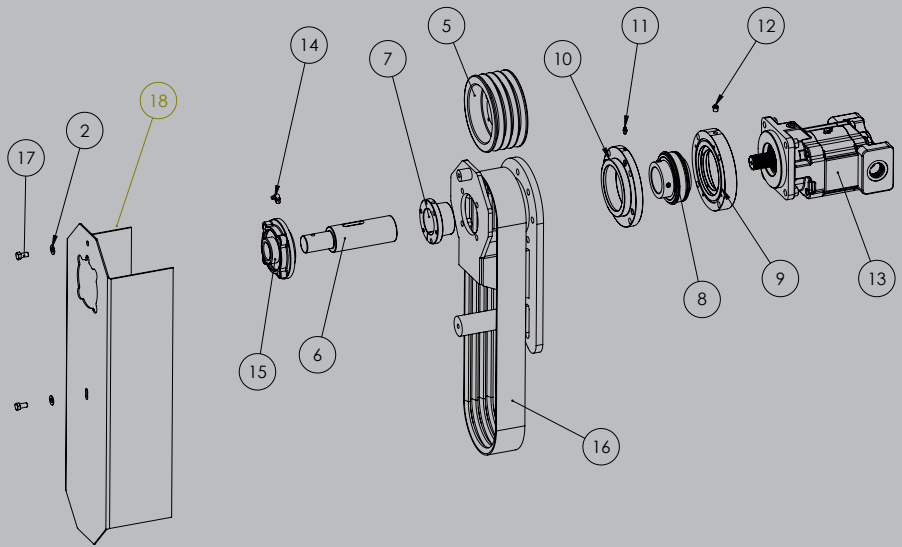


## REPLACING COMPLETED OHLA ASSEMBLY

1. BOLT THE COMPLETED OHLA ONTO THE HEAD
2. WITH THE PULLY ON THE SHAFT, PLACE A STRAIGHT EDGE FROM PULLY TO PULLY USING THE SAME GROVES ON EACH PULLY.
3. MEASURE FROM THE BACK PLATE TO THE PIECE OF METAL/WOOD THAT YOU ARE USING AT THE TOP AND THE BOTTOM. IF MEASUREMENTS DO NOT MATCH, ADJUST THE PULLY AND QD ON THE SHAFT.
4. LOOSEN THE OHLA AND LET IT SLIDE DOWN AS FAR AS IT WILL GO WITH ALL THREE BOLTS INSTALLED AND PUT THE BELT ON. (IF BELT IS VERY TIGHT AND DOESN'T WANT TO GO ON, TAKE OUT THE UPPER BOLT ON THE OHLA AND LOOSEN THE THE BOTTOM TWO UNTIL THEY ARE HALF WAY OUT. THIS ALLOWS THE OHLA TO SIT AT AN ANGLE AND WILL MAKE INSTALLING THE BELT EASIER).
5. TO TIGHTEN THE BELT, USE TWO PRY BARS AND AN EXTRA SET OF HANDS. PLACE ONE PRY BAR UNDER EACH SIDE OF THE MOTOR AND PUSH DOWN ON THEM MOVING THE MOTOR UP.
6. MEASURE FREE PLAY OF THE BELT. SHOULD BE ABOUT 1/16".
7. TIGHTEN ALL THREE OHLA MOUNTING BOLTS.

## BELT DRIVE ASSEMBLY

ITEM NO.	PART NUMBER	DESCRIPTION	QTY.
1	2562322 Rev B	OHLA Weldment 2013	1
2	2561301	3/8 Flat Washer Yellow Zinc	2
3	2558023	7/16"-14 Top Lock Nut	4
4	2556571	1/2"-13 Top Lock	4
5	2560643	Martin 4 5V 670 SK Sheave	1
6	2562533	OHLA - SAE C Stub Shaft - Splined	1
7	2562551	QD Bushing 2.25	1
8	2562558	ER Bearing Inserts	1
9	2562534 Rev A	Bearing Housing Cap	1
10	2562607	Bearing Housing	1
11	2558017	1/4-28 Grease Zerk	1
12	Default	5 PSI Poppet Valve	1
13	M257A(767DU)RRZA25-6		1
14	2600231	1/8in MPT 90 Grease Fitting	1
15	2562327	UCFCX0824 Pilot Bearing	1
16	2560899	4-5VX600 Belt	1
17	2559405	3/8"-16 x 3/4" Grade 8 Bolt	2
18	2563252 Belt Cover Rev B		1



## CUTTER SHAFT ASSEMBLY

### PART #2562445

ITEM NO.	PART NUMBER	DESCRIPTION	QTY.
6	2560622	De-Thatch Blade	14
7	2558468	2lb. Forged Blade	28
8	2558544	1" Blade Bolt - Std	14
9	2558349	1" Slotted Nut	14
10	2560759	1/4" X 1-1/2" Roll Pin	14

### COMPLETE BLADE, BOLT AND NUT KIT EX50HD & HDBD PART #2564498